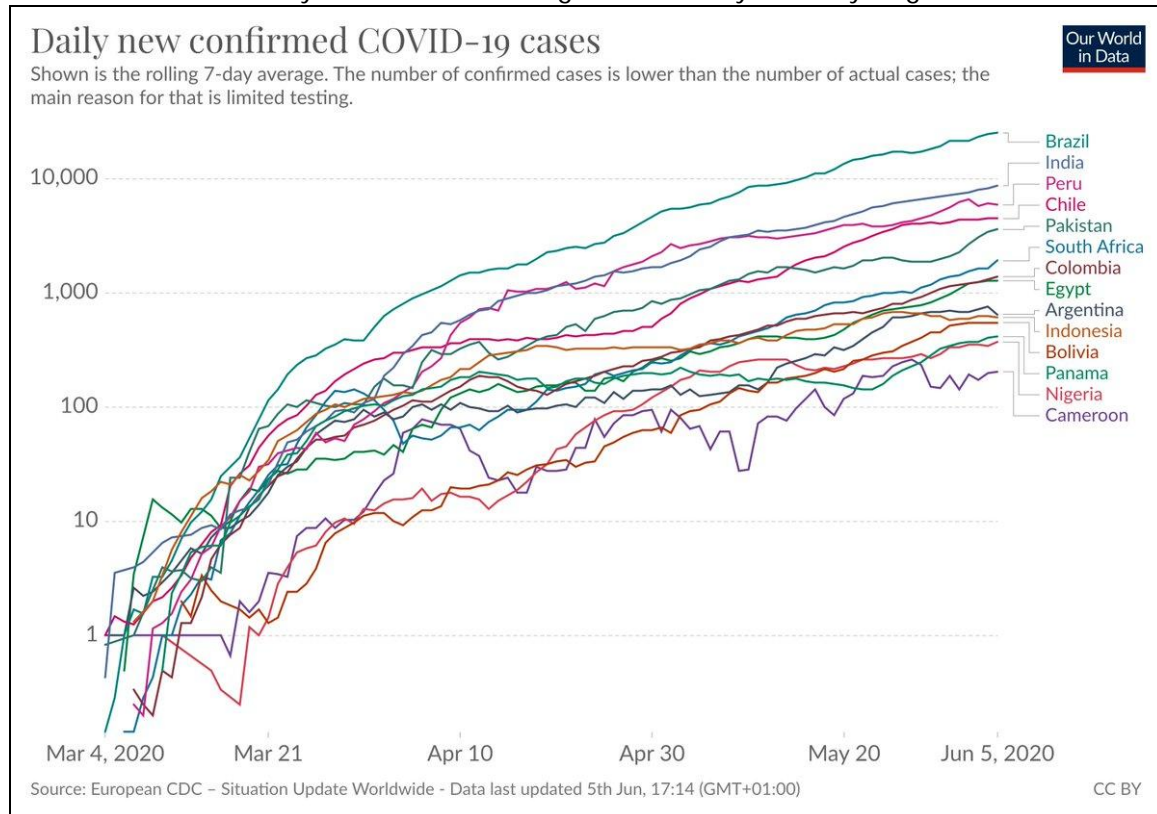


[Three charts on why I think we are still in the early days of the pandemic](#)
and why I'm very pessimistic about the coming months.

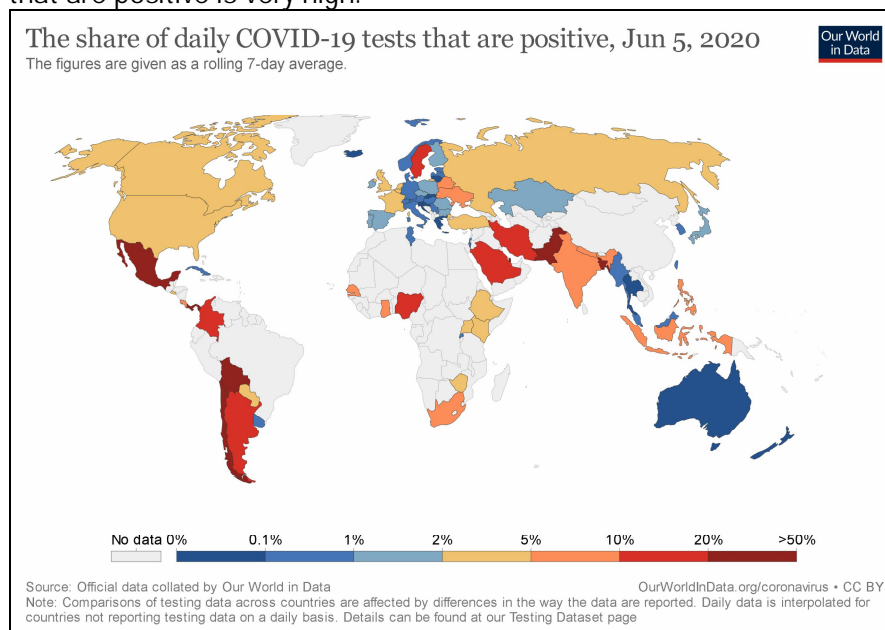
Max Roser, twitter, June 5, 2020



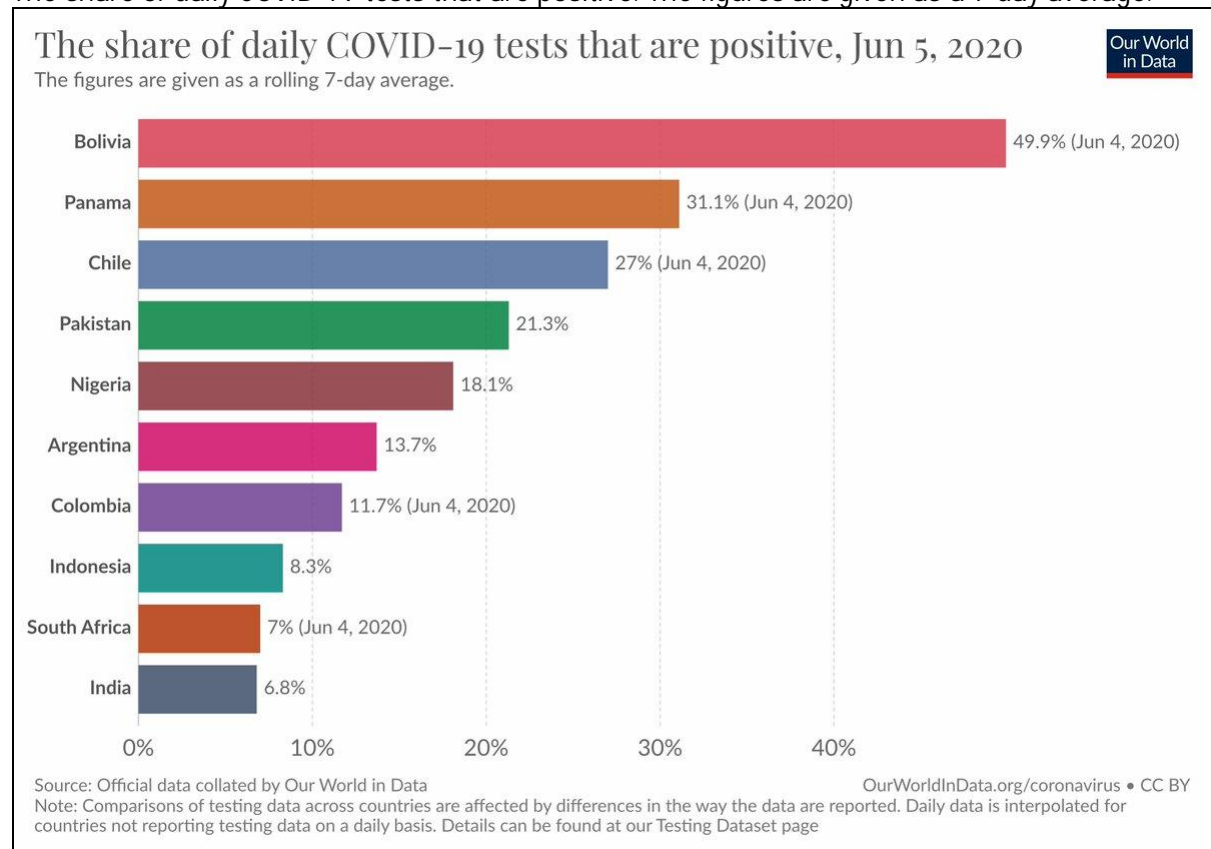
1/ The number of daily new cases is rising continuously in many large countries.



2/ Confirmed cases are a fraction of total cases. Wide testing is required to confirm a large share of total cases. But these – and many other countries – do not test very widely; the share of tests that are positive is very high.



The share of daily COVID-19 tests that are positive. The figures are given as a 7-day average.



3/ These countries – like many others – see confirmed cases rise despite being in lockdowns. Lockdowns are very costly, socially and economically, and cannot remain for a very long time; especially in poor countries.

